

CHALMERS WALL HUNG BASIN

Cat. No
4-9002



Faucet Not Included



Mounting hardware

W: 26-1/4"
D: 15-5/8"
H: 5-3/4"

Interior Dimensions:

Basin Interior: 14-1/2" x 26-1/4"
Basin Depth: 2-1/8"
Back of basin to center of faucet: 2-1/2"
Back of basin to center of drain: 8"
Mount holes cc: 11-1/4"
Faucet hole diameter: 1-3/8"

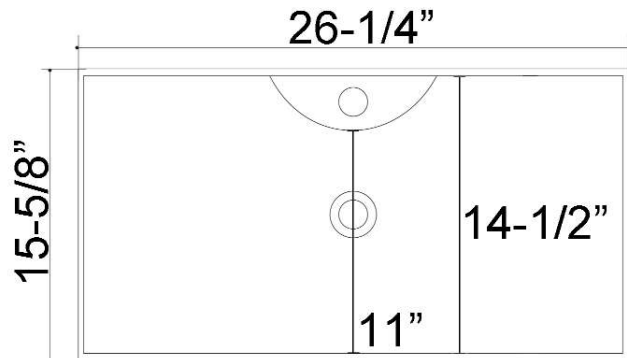
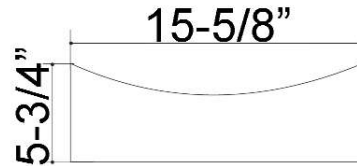
Features:

- ▶ Wall hung basin
- ▶ Made of Vitreous China
- ▶ Sloped interior
- ▶ Pre-drilled with 1-3/8" single faucet hole
- ▶ No overflow
- ▶ Mounting hardware included
- ▶ Drain not provided

Colors

WH White

Meets or exceeds the following specifications: ASME A112.19.2 2013 and CSA B45.1-13 for ceramic plumbing fixtures.



Dimensions of fixture are nominal and may vary within the range of tolerances established by ASME Standard A112.19.2.2013 Dimensions and specifications subject to change without notice.